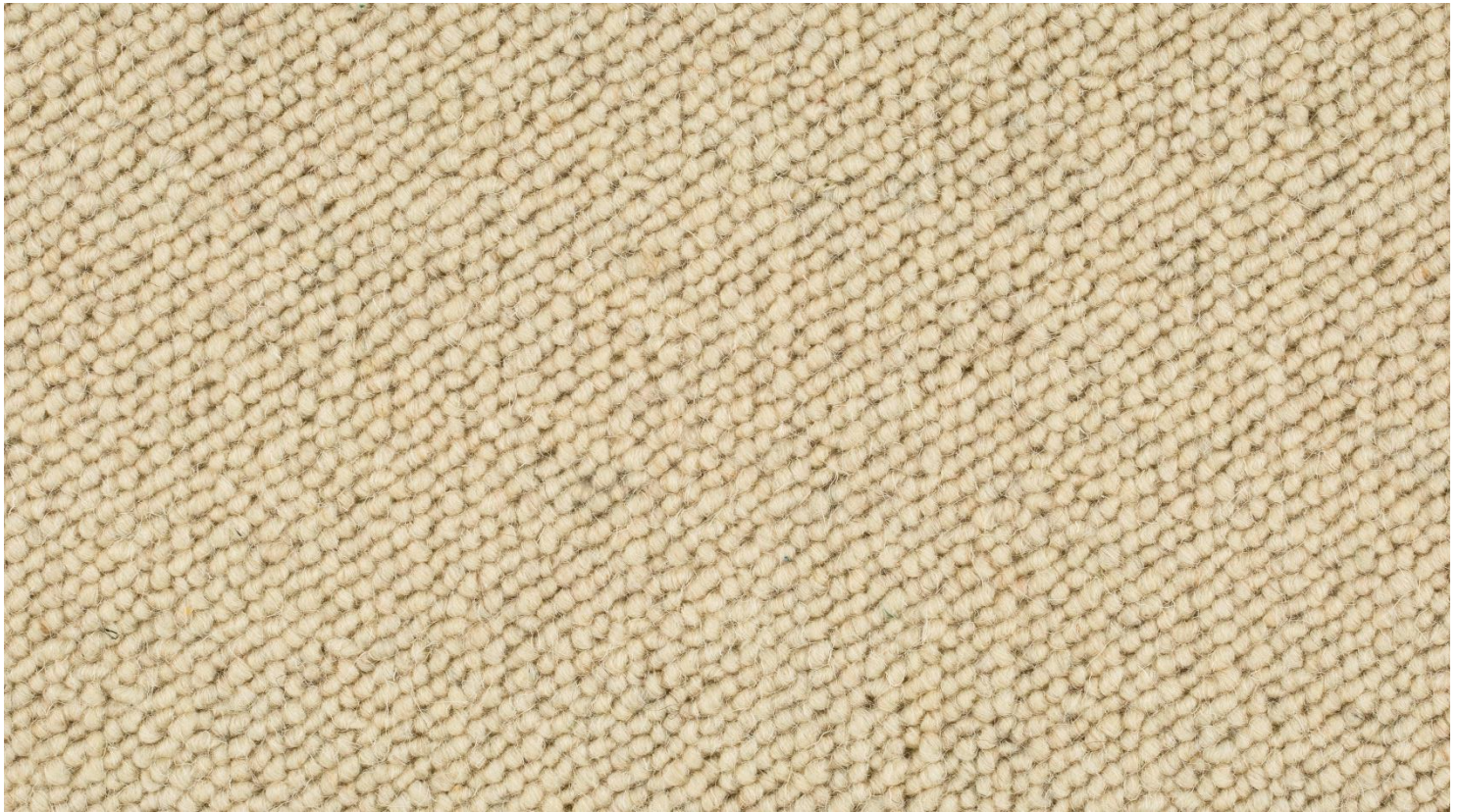


Technical data sheet  
**Wool24 Nelson**

**Carpet**



Article number(s):	502   519

**Pictograms / Quality seal / Certificates**



DoP number: TEPNELS4/5

09 | 2020

Information subject to technical modification and error. All previous data sheets are no longer valid on publication of this edition.

W. & L. Jordan GmbH | Horst-Dieter-Jordan-Straße 7-10 | D-34134 Kassel | info@joka.de | www.joka.de



# Technical data sheet

## Wool24 Nelson

### Material / structure

Type of production	Tufted
Texture	1/4" Loop
Pile material	100% new wool
Backing design	Textile web fibre backing
Pile weight (g/m <sup>2</sup> ) approx.	1.100
Pile height (mm) approx.	8,0
Total weight (g/m <sup>2</sup> ) approx.	1.970
Total height (mm) approx.	10,0
Number of tufts/m <sup>2</sup> approx.	48.670
Dimensions (cm) approx.	400 + 500 + made-to-measure carpet
Repeat (L x W in cm)	Without repeat

### Product characteristics

Hard-wearing value	23 high - residential
Comfort value	LC 5 - prestige
Improvement in impact sound glued (dB) approx.	25
Degree of sound absorption ( $\alpha_w$ )	-
Lightfastness	-
Can be laid dissipative	-
Thermal resistance (m <sup>2</sup> xK/W) approx.	0,14
Fire behaviour	C <sub>fl</sub> -s1
Anti-static	Yes
Suitable for chair castors	No
Skidding behaviour	DS

### Tolerances

Deviation in height	Nominal value + 15 %, - 10 %
Deviation in length	Nominal length $\pm$ 1.0 %
Deviation in width	Nominal width $\pm$ 1.0 %
Deviation in number of tufts	Nominal value + 10 %, - 7.5%
Deviation in pile weight	Mean value + 13 %, - 10 %
Deviation in total weight	Nominal value $\pm$ 15 %

Dimensions and tolerance values in accordance with the standards DIN EN 14159 and EN 1307. Dimensional characteristics and permitted dimensional deviations, which have been determined in the factory, have been given in accordance with the standard.